



# EMpower v2.1 Installation manual

## Table of contents

|  |          |
|--|----------|
| <b>Requirement .....</b>                         | <b>1</b> |
| <b>For installing and running EMpower: .....</b> | <b>1</b> |
| <b>Mac .....</b>                                 | <b>3</b> |
| <b>Troubleshooting .....</b>                     | <b>3</b> |
| <b>Windows / Linux .....</b>                     | <b>4</b> |
| <b>Start the Installation.....</b>               | <b>6</b> |
| <b>Start EMpower .....</b>                       | <b>7</b> |



## Requirements for installing and running EMpower:

|                                | Recommended  |
|--------------------------------|--|
| <b>CPU</b>                     | 64-bit Intel i7 equivalent or better                   |
| <b>RAM</b>                     | 16 GB+   |
| <b>Screen Resolution</b>       | 1920 x 1080  |
| <b>Installation disk space</b> | 200MB  |
| <b>Data disk space</b>         | 50GB + <i>(depends on the survey)</i>                  |
| <b>Internet Connection</b>     | Required to authenticate license code                  |
| <b>SD Card reader</b>          | USB 3.0 <i>(or equivalent speed)</i> for data transfer |
| <b>Monitor Size</b>            | 13" +  |

### Windows

Versions supported: Windows 10 and up, 64-bit

Permissions required: Must be logged in as Administrator

### Linux

Versions tested: Ubuntu 18.04, 64 bit

Permissions required: Standard user

### Mac

OS versions tested: 10.11, "El Capitan" and 10.15.4, "Catalina" 64 bit

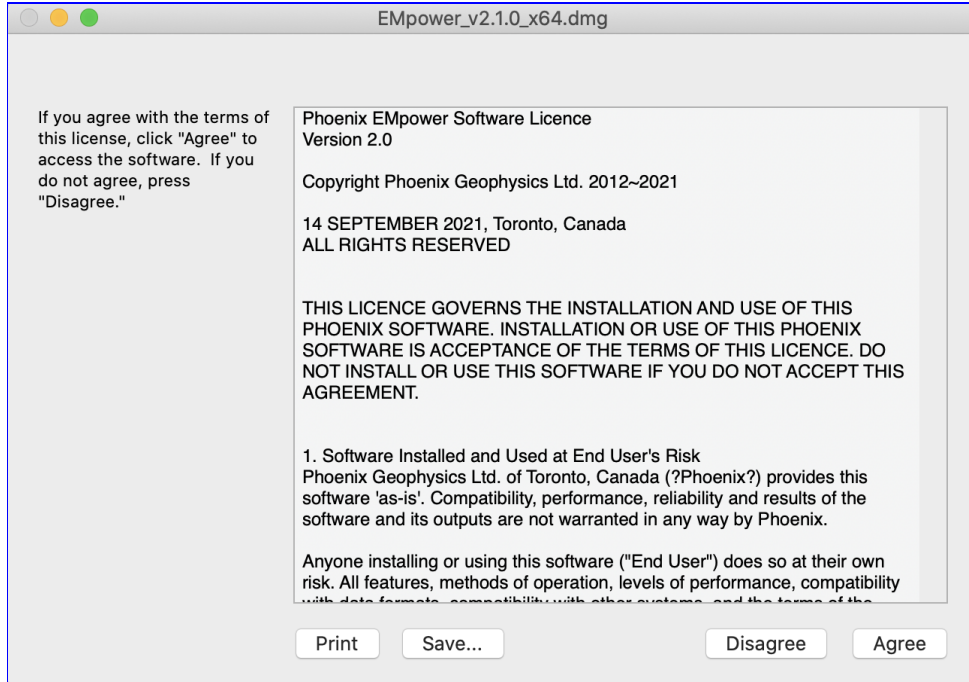
**Note:** *User needs to change system setting allowing installation of apps from app store and unidentified developers*

## Mac

1. Drag and drop the installer onto the Applications folder to begin the installation.



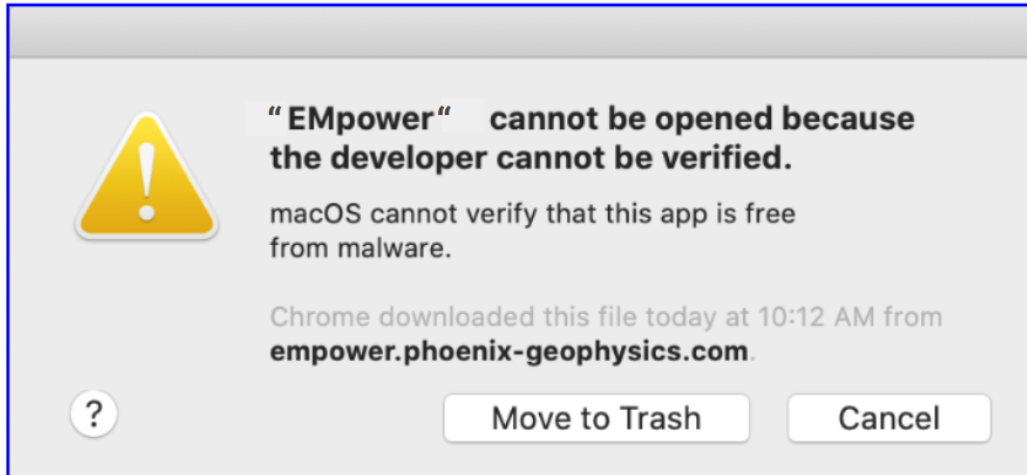
2. Read the EMpower License Agreement



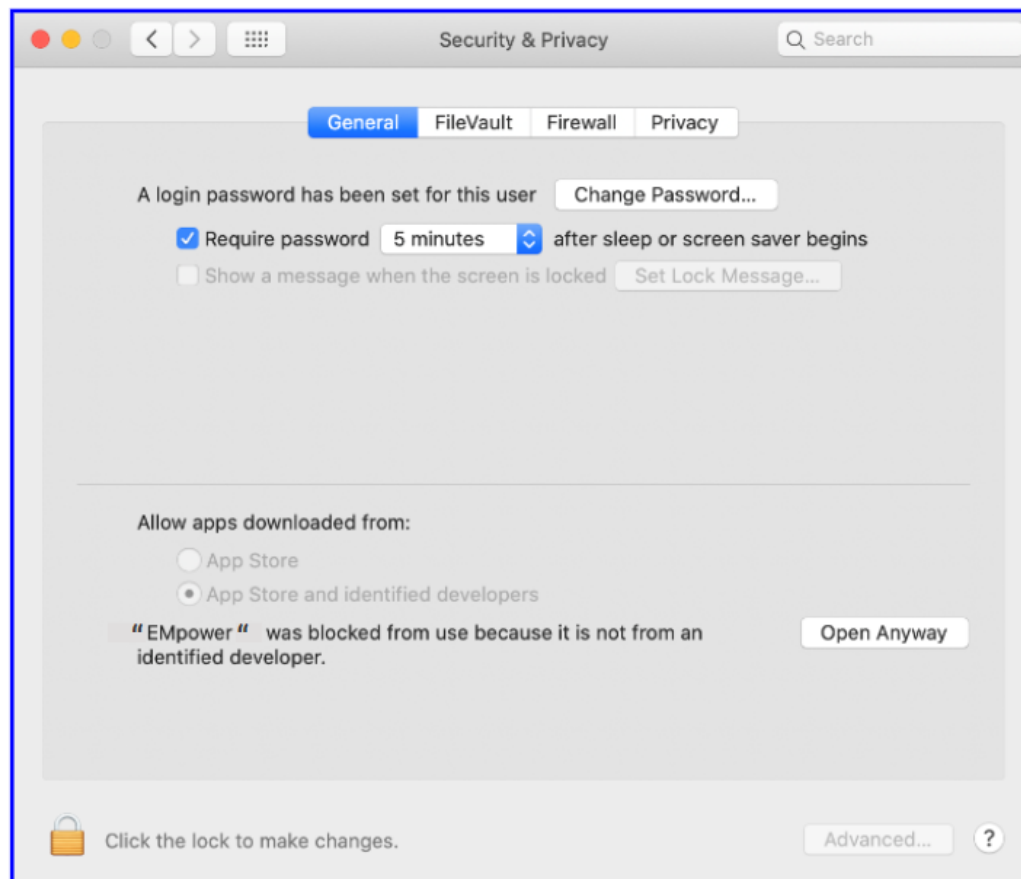
- If you agree with the terms of the EMpower license agreement, then click the **Agree** button

## Troubleshooting

3. Mac OS default security settings block installing EMpower because Phoenix is not a registered developer



4. To continue the installation, go to macOS System Preferences / Security & Privacy and click on **Open Anyway**

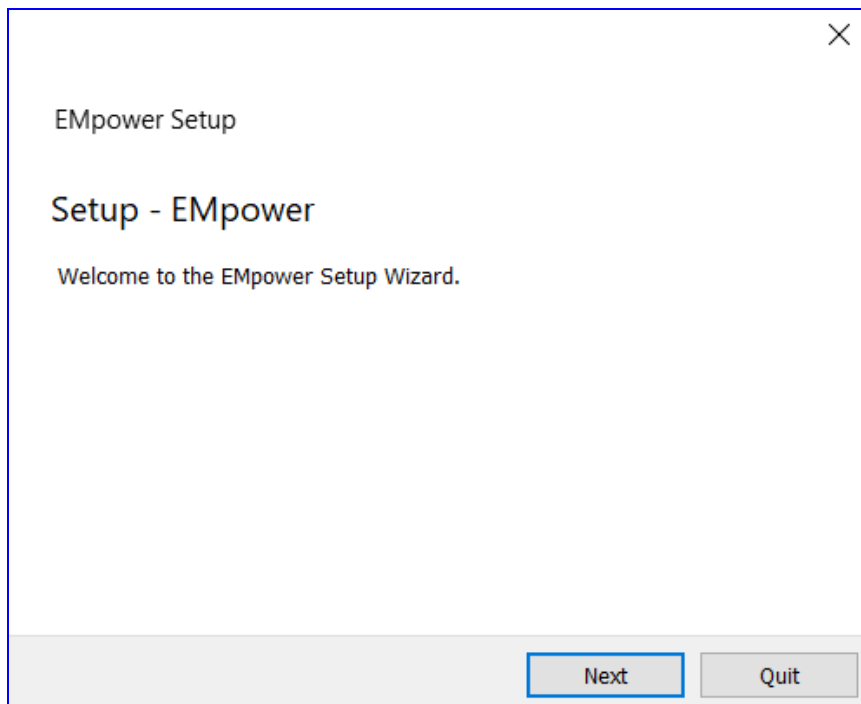


## Windows / Linux

1. EMpower Setup Wizard by double clicking on the Empower installation executable file. This file will look similar to the example shown below.

**Windows:** EMpower\_v2.###\_x86\_amd64.exe

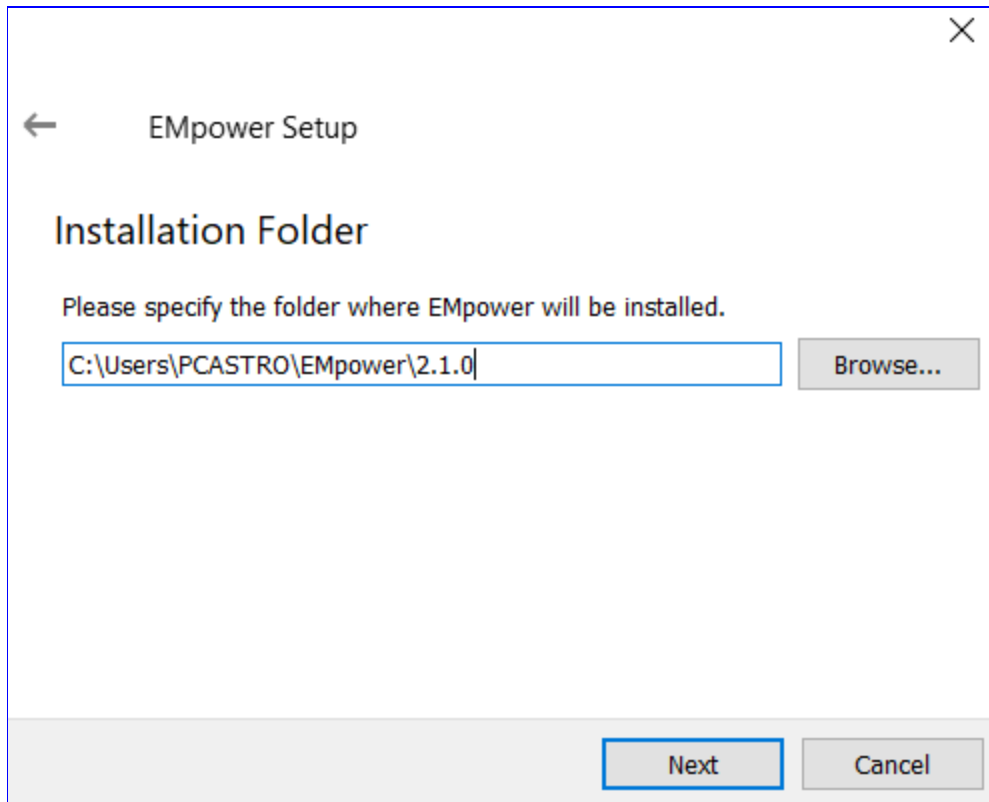
**Linux:** EMpower\_v2.###\_x\_x64.run



- Click Next

### 3. Installation Folder

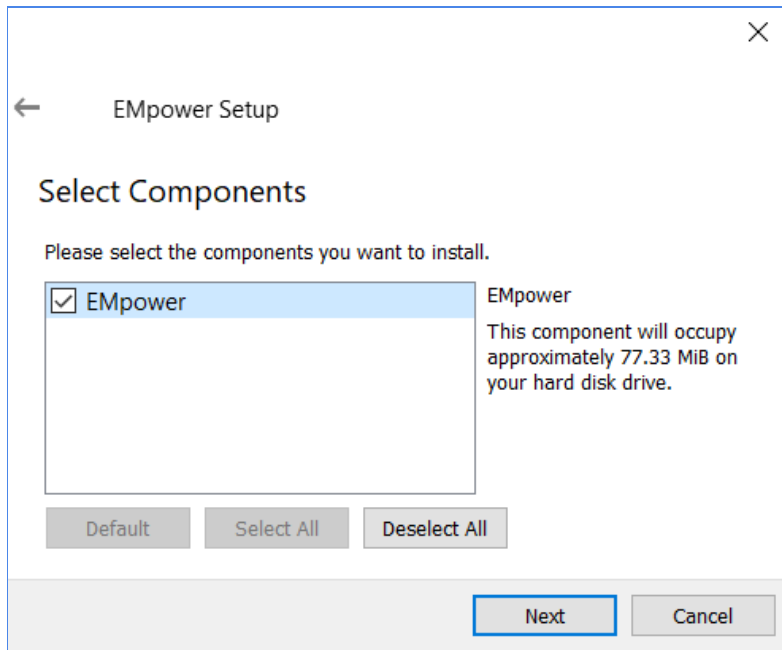
- Use the default directory from the installer, or press Browse to select a different directory



- Click Next

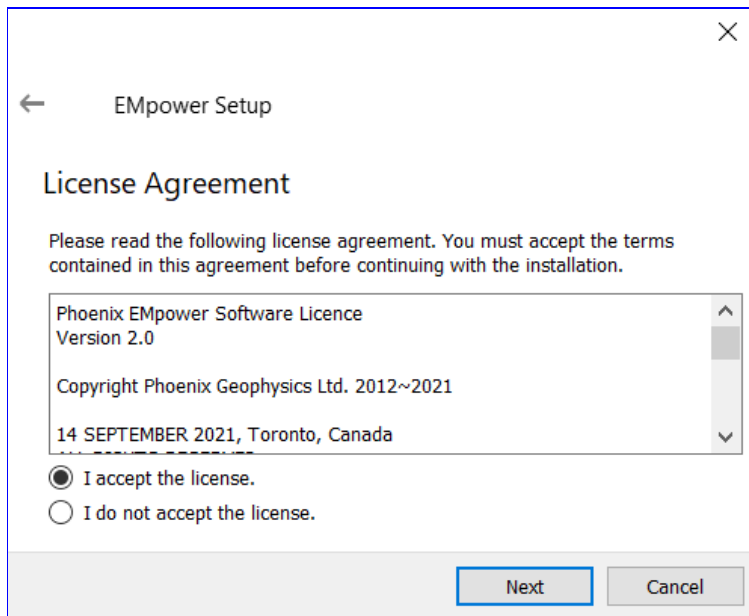
### 3. Hard drive memory space required

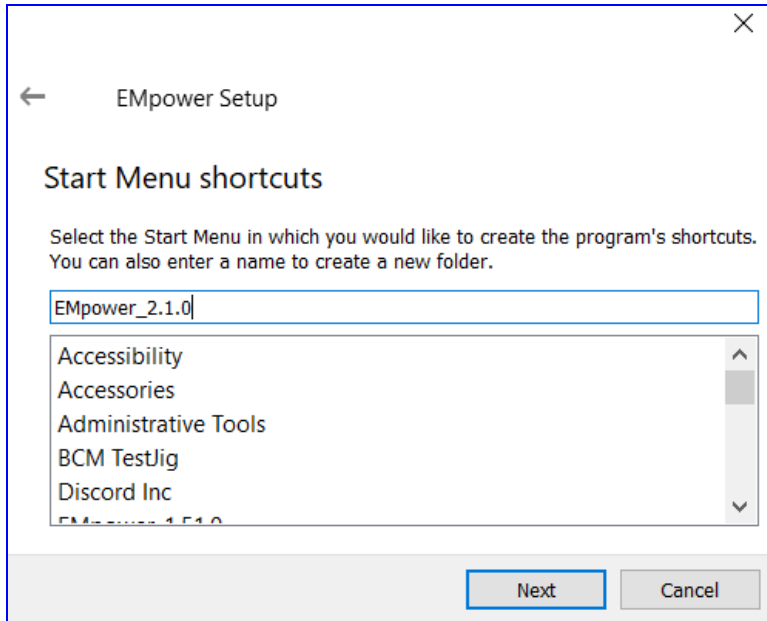
- Review the memory space requirement
- Click Next



### 4. Read the EMpower License Agreement.

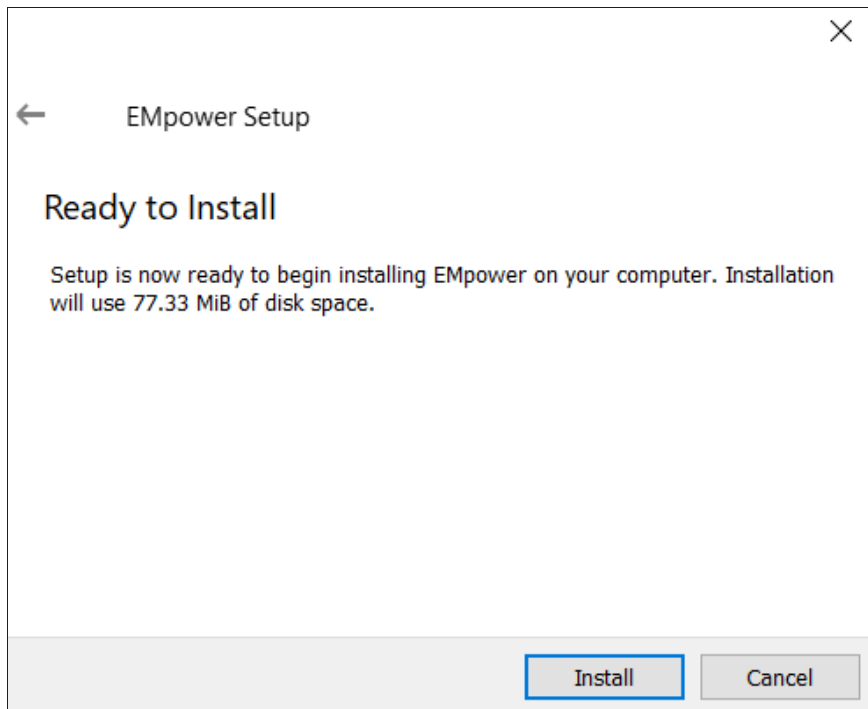
- If you agree with the terms select “**I accept the license**“ option
- Click **Next** button





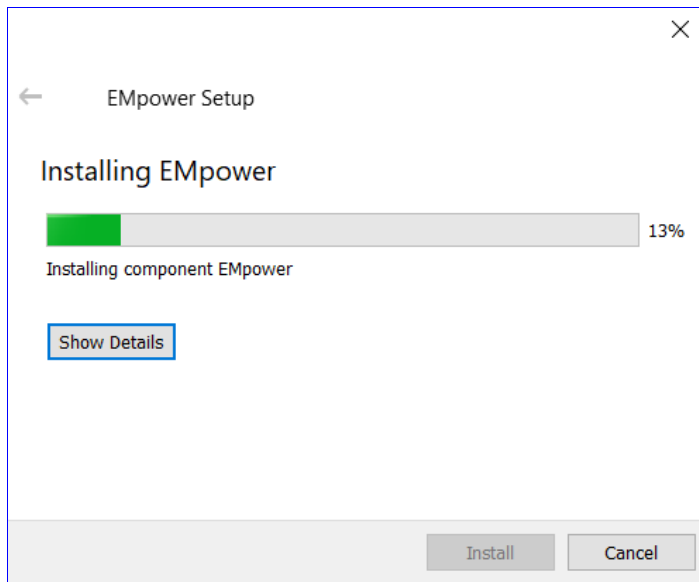
## 5. Start the Installation

- Click the **Install** button to begin the installation

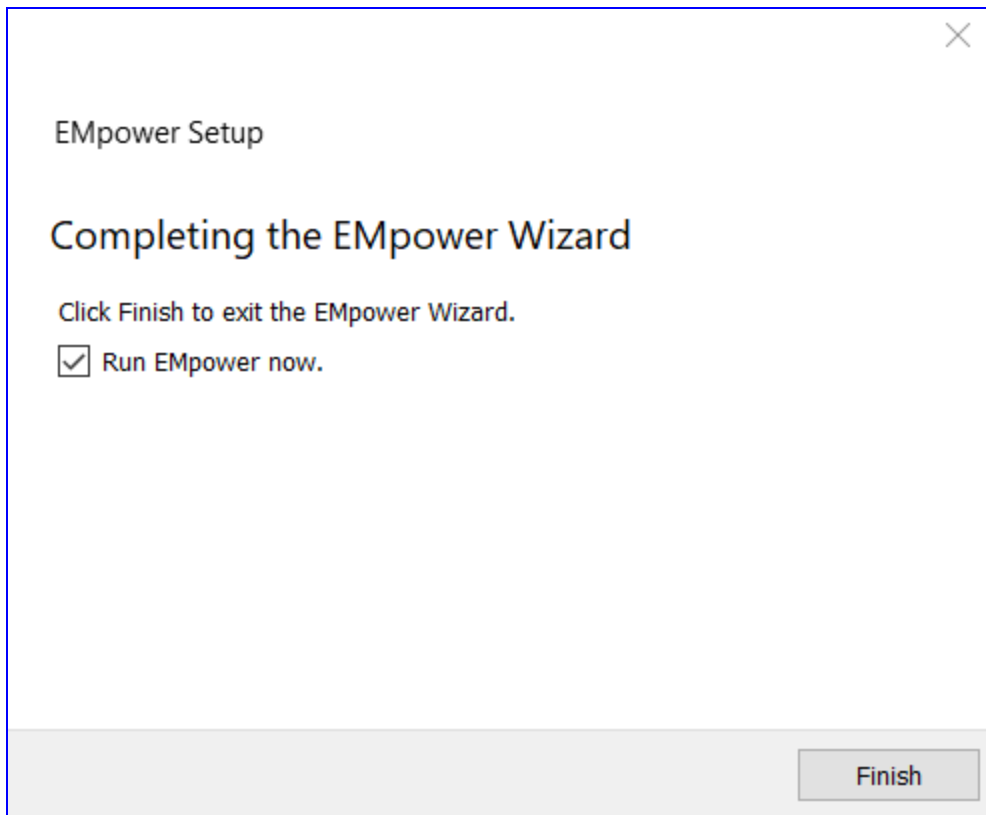


*The windows installer does not have a back button.*



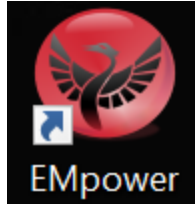


6. Click the **Finish** button to complete the EMpower installation



## Start EMpower

1. Click the **EMpower** shortcut icon (Windows / Mac)



- In Linux, run the empower.sh script in the EMpower installation directory

2. The Text “Unlicensed” will appear at the bottom of the **EMpower** application window

- The **Prepare** module can be used without license



3. The Manage module can only be used activating the EMpower license, (see EMpower - License activation document)



Please check out the [FAQs \(https://phoenixgeophysics.freshdesk.com/\)](https://phoenixgeophysics.freshdesk.com/)

Or email us at: [support@phoenix-geophysics.com](mailto:support@phoenix-geophysics.com)